



JT120

HORIZONTAL DIRECTIONAL DRILL



Ditch Witch[®]

JT120

Loaded with 120,000 lbs (533.8 kN) of pullback/thrust and 15,500 ft-lbs (21015 N-m) of rotational torque, the JT120 not only opens you up to new types of jobs, but also moves through long bores and large diameter installs with eye-popping power. Plus, a 280-hp (209-kW) Stage V Cummins® engine reduces environmental impact without losing any power.

At 80 dBA, the JT120 reduces jobsite noise for a more comfortable and productive jobsite.

The new large displacement fluid pump with an increased fluid flow brings the GPMs needed to boost uptime.

The new engine compartment and compartment panel design free up more room around critical components, making maintenance easier and more efficient.

The 20-foot drill pipe helps your machine limit makeup/breakout and maximizes drilling time.

The enclosed, climate-controlled cab features heated suspension seats, added legroom and two LED touchscreen displays.

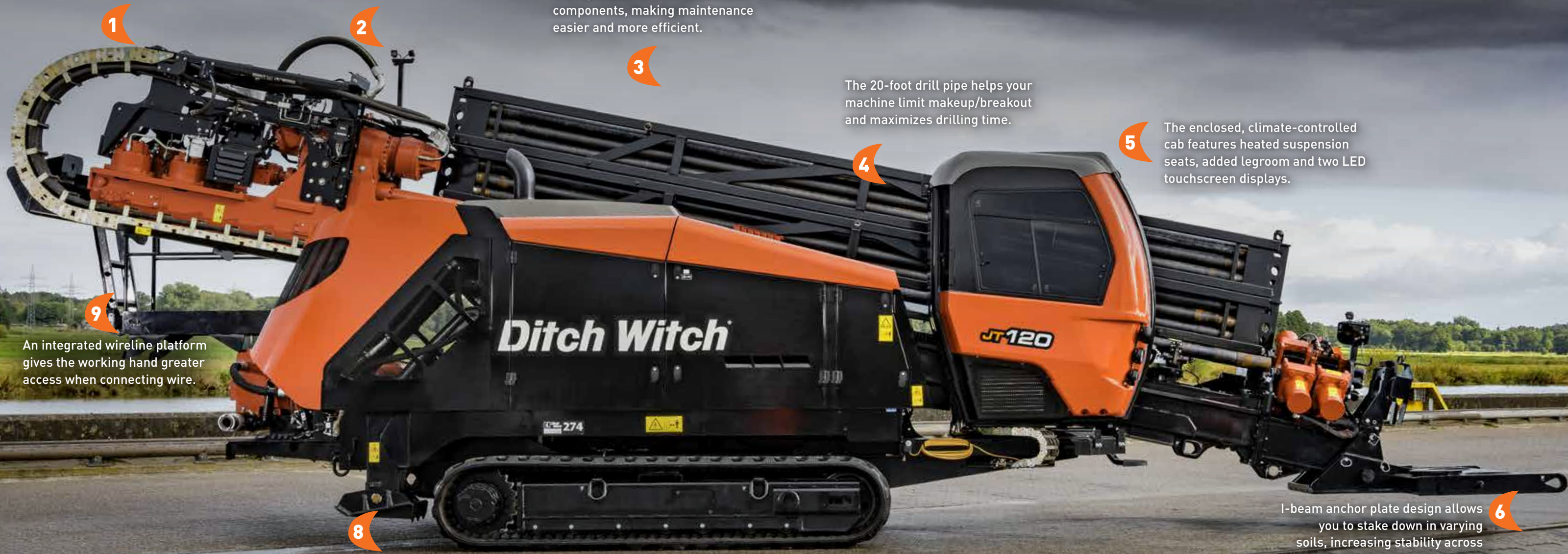
An integrated wireline platform gives the working hand greater access when connecting wire.

Independent stabilizers in the rear of the machine provide even more stability across uneven terrain.

I-beam anchor plate design allows you to stake down in varying soils, increasing stability across demanding jobs and tough terrain.

A wireless remote allows you to operate critical machine functions from outside the cab.

Wireless Remote



JT120 HORIZONTAL DIRECTIONAL DRILL

OPERATION	U.S.	METRIC
Spindle speed, max	190 rpm	
Spindle torque, max	15,500 ft·lb	21015 N·m
Carriage thrust travel speed	210 fpm	64 m/min
Carriage pullback travel speed	210 fpm	64 m/min
Thrust force	120,000 lb	533.8 kN
Pullback force	120,000 lb	533.8 kN
Bore diameter	6.5 in	165 mm
Backreamer diameter	Soil dependent	
Ground travel speed		
Forward/reverse	2.8 mph	5 km/h

POWER

Engine	Cummins® QSB6.7	
Fuel	Diesel	
Cooling medium	Liquid	
Injection	Direct	
Aspiration	Turbocharged & charge air cooled	
Number of cylinders	6	
Displacement	409 in ³	6.7 L
Bore	4.21 in	107 mm
Stroke	4.88 in	124 mm
Manufacturer's gross power rating	280 hp	209 kW
Rated speed	2,200 rpm	
Emissions compliance	EPA Tier 4F	EU Stage V

DIMENSIONS

Length	453 in	11.5 m
Width	100.4 in	2.55 m
Height, w/ cab	122 in	3.10 m
Operating weight	47,186 lb	21403 kg
Entry angle, max	12-18°	
Angle of approach	17°	
Angle of departure	17°	

DRILLING FLUID SYSTEM	U.S.	METRIC
Pressure, max	1,100 psi	76 bar
Flow, max	285 gpm	1079 l/min

FLUID CAPACITIES

DEF tank	12.2 gal	46.3 L
Hydraulic reservoir	39 gal	148 L
Fuel tank	120 gal	454 L
Engine lubrication oil, w/filter	18.5 qt	17.5 L
Antifreeze tank	20 gal	76 L

POWER PIPE® HD (3.36DS)

Length of drill pipe	240 in	6.10 m
Diameter of drill pipe, tool joint end	4.38 in	111.2 mm
Diameter of drill pipe	3.95 in	100 mm
Bend radius, min	205 ft	62.5 m
Weight of drill pipe, lined	285 lb	129 kg

BATTERY (2 USED)

SAE reserve capacity rating	175 min
SAE cold crank rating @ 0°F (-18°C)	950 amps

NOISE LEVEL

Operator sound pressure per ISO 6394	< or = 80 dBA
--------------------------------------	---------------

VIBRATION LEVEL

Average vibration transmitted to the operator's hand and whole body during normal operation does not exceed 2.5 and 0.5 m/sec² respectively.

Specifications are general and subject to change without notice. If exact measurements are required, equipment should be weighed and measured. Due to selected options, delivered equipment may not necessarily match that shown.

