

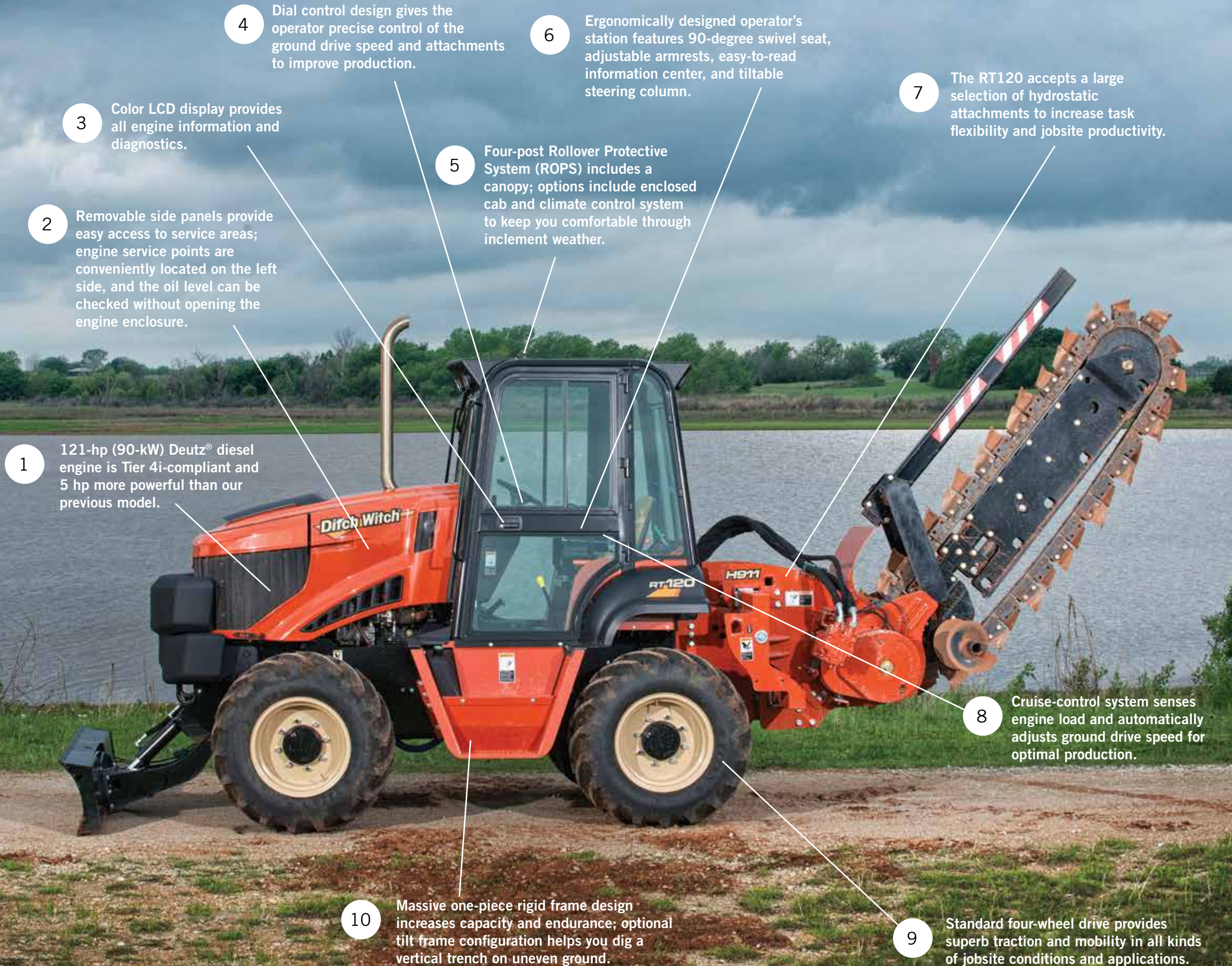
RT120 TRACTOR

 **Ditch Witch**[®]



RIDE-ON

RT120 TRACTOR



1 121-hp (90-kW) Deutz® diesel engine is Tier 4i-compliant and 5 hp more powerful than our previous model.

2 Removable side panels provide easy access to service areas; engine service points are conveniently located on the left side, and the oil level can be checked without opening the engine enclosure.

3 Color LCD display provides all engine information and diagnostics.

4 Dial control design gives the operator precise control of the ground drive speed and attachments to improve production.

5 Four-post Rollover Protective System (ROPS) includes a canopy; options include enclosed cab and climate control system to keep you comfortable through inclement weather.

6 Ergonomically designed operator's station features 90-degree swivel seat, adjustable armrests, easy-to-read information center, and tiltable steering column.

7 The RT120 accepts a large selection of hydrostatic attachments to increase task flexibility and jobsite productivity.

8 Cruise-control system senses engine load and automatically adjusts ground drive speed for optimal production.

9 Standard four-wheel drive provides superb traction and mobility in all kinds of jobsite conditions and applications.

10 Massive one-piece rigid frame design increases capacity and endurance; optional tilt frame configuration helps you dig a vertical trench on uneven ground.



Versatility equals productivity. And as the most versatile machine in the RT Series—the best-selling trencher family in the world—the RT120 Tractor can help you be more productive on every jobsite. Durable components backed by 15 years of proven performance and a new 121-hp (90-kW) Deutz diesel engine keep the RT120 running strong all day long, while a huge range of attachments—trencher, plow, saw, backhoe, reel carrier, and trencher/plow combo—lets you tackle just about any task. It's the go-to machine customers depend on. And we just made it better.

WE'RE IN THIS TOGETHER.



RT120 TRACTOR ATTACHMENTS



	U.S.	METRIC
--	------	--------

H932 PLOW

DIMENSIONS		
Angle of departure	23°	
Attachment length	69 in	1.73 m
Cover depth	36 in	920 mm
Attachment weight, w/out plow blade	2,400 lb	1100 kg

H952 TRENCHER/PLOW COMBO

DIMENSIONS		
TRENCHER		
Trench depth, max	70 in	1.78 m
Trench width	6-12 in	150-300 mm
Transport length	126 in	3.2 m

PLOW		
Attachment length, fully lowered, no blade	103 in	2.62 m
Cover depth	36 in	915 mm
Attachment weight w/out boom, chain or plow blade	3,065 lb	1390 kg

H910 CENTERLINE TRENCHER

DIMENSIONS		
Trench depth, max	97 in	2.46 m
Trench width, max	24 in	610 mm
Transport length	112 in	2.85 m
Attachment weight, w/out boom and chain	1,750 lb	794 kg

H911 TRAVERSING TRENCHER

DIMENSIONS		
Angle of departure	27°	
Trench depth, max	90 in	2.29 m
Trench width, max	24 in	610 mm

H1140 SAW

DIMENSIONS		
Angle of departure	21°	
Trench depth	40 in	1.02 m
Quantity of cutting teeth on wheel		
4.5-in width	70	
6-in width	80	
9-in width	110	
Attachment length, wheel on ground	252 in	6.4 m
Attachment weight	5,900 lb	2676 kg

A920 BACKHOE

DIMENSIONS		
Digging depth, max	112 in	2.8 m
Reach from swing pivot	158 in	4 m
Bucket width	12-24 in	305-610 mm
Backhoe weight, w/18-in (686-mm) bucket	3,300 lb	1497 kg
Swing arc	180°	

RC120 REEL CARRIER

DIMENSIONS		
Reel diameter, max	84 in	2.13 m
Internal width	54 in	1.37 m
Capacity	2,500 lb	1134 kg
Attachment weight, w/six 96-lb (44-kg) counterweights	1,600 lb	726 kg

RT120 TRACTOR SPECIFICATIONS

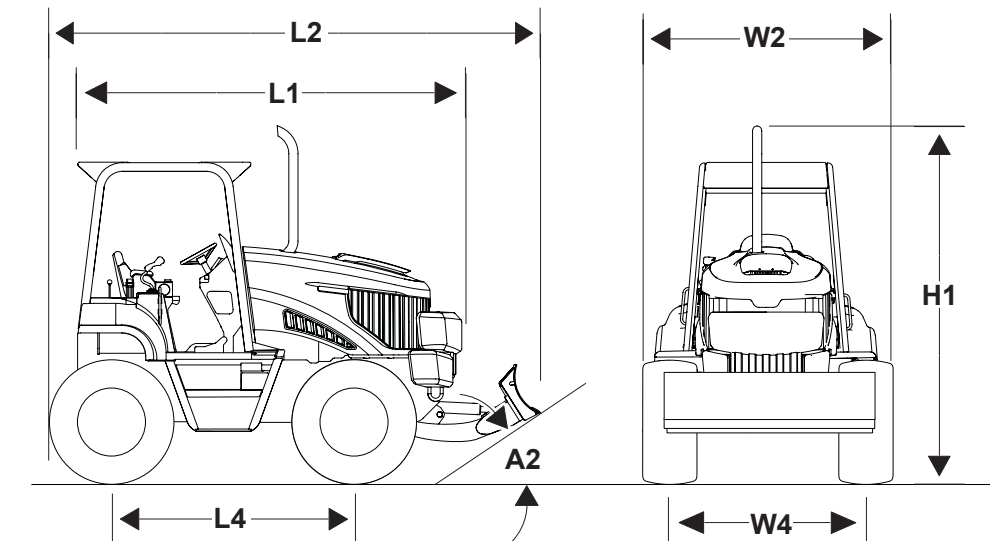
	U.S.	METRIC
--	------	--------

DIMENSIONS		
Height (H1)	115 in	2.92 m
Length, nose to rear mount (L1)	125 in	3.17 m
Length, transport (L2)	154 in	3.91 m
Wheelbase (L4)	79 in	2 m
Width (W2)	82 in	2.1 m
Angle of approach (A2)	25°	
Tread (W4)	64 in	1.63 m

POWER		
Engine	Deutz® TCD3.6L4	
Fuel	Diesel	
Cooling medium	Liquid	
Injection	Direct	
Aspiration	Turbocharged, charge air cooled	
Number of cylinders	4	
Displacement	221 in ³	3.6 L
Bore	3.86 in	98 mm
Stroke	4.72 in	120 mm
Manufacturer's gross power rating (SAEJ1349)	121 hp	90 kW
Rated speed	2,300 rpm	
Engine tilt angles, max		
Longitudinal/lateral	30°	
Emissions compliance	EPA Tier 4i	EU Stage IIIb
Emissions compliance (rest of world)	EPA Tier 3	EU Stage IIIa

POWER TRAIN		
Ground drive transmission	Hydrostatic	
Differentials	Planetary front and rear w/optional rear steering	
Service brake	Hydrostatic disc, foot operated	
Parking brake	Disc, hand operated	
Tires	38 x 18-20 14-ply bar lug flotation; inflate to 72 psi (4.9 bar)	
Attachment drive transmission	Hydrostatic, lever-operated speed infinitely variable from zero to max	

Specifications are general and subject to change without notice. If exact measurements are required, equipment should be weighed and measured. Due to selected options, delivered equipment may not necessarily match that shown.



	U.S.	METRIC
--	------	--------

OPERATION		
Forward speed		
Low/low	0.5 mph	0.8 km/h
Low/high	1.3 mph	2.1 km/h
High/low	4.5 mph	7.2 km/h
High/high	9.2 mph	14.8 km/h
Reverse speed		
Low/low	0.5 mph	0.8 km/h
Low/high	1.3 mph	2.1 km/h
High/low	3.2 mph	5.1 km/h
High/high	5.5 mph	8.8 km/h
Vehicle clearance circle (SAE) wall to wall w/optional backfill blade		
Front steer only	34.3 ft	10.4 m
Front and rear steer	20.8 ft	6.3 m
Ground clearance	14 in	356 mm
Basic unit weight	8,700 lb	3946 kg
Allowable tractor weight, max	19,300 lb	8754 kg
Front counterweight	1,300 lb	590 kg
Side counterweight (each)	250 lb	114 kg

HYDRAULIC SYSTEM @ 2,300 RPM		
Ground drive pump capacity	27.9 gpm	106 l/min
Ground drive pump relief pressure	5,000 psi	345 bar
Auxiliary pump capacity	13.6 gpm	51.5 l/min
Auxiliary pump relief pressure	2,500 psi	172.4 bar

FLUID CAPACITIES		
Fuel tank	38 gal	144 L
Engine oil	8.5 qt	8 L
Hydraulic reservoir	24 gal	91 L
Hydraulic system	29 gal	110 L
Cooling system	12.3 qt	11.6 L

BACKFILL BLADE		
Blade width	80 in	2.03 m
Blade height	17 in	430 mm
Lift height above ground	21 in	530 mm
Blade drop below ground	11 in	280 mm
Swing angle, max, left/right	30°	
Tilt angle, up/down	24°	



FIND THE SUPPORT YOU NEED AT YOUR DITCH WITCH® DEALER, INCLUDING:



DIGGING SYSTEMS

Replacing worn digging system components is essential to maintaining maximum productivity from your trencher. See your dealer for genuine Ditch Witch chain, specially manufactured headshaft sprockets and digging teeth, which are designed to work together as a system to provide unparalleled trenching performance.



PARTS

Tires, rubber tracks, o-ring kits, decals, paint, filters, hydraulic cylinder kits, belts, and many other accessories and replacement parts are available at your local Ditch Witch dealership, where you'll also find expert advice that comes from years of experience in the underground construction industry.



SERVICE

Your Ditch Witch dealership offers professional service technicians who are extensively trained in every aspect of Ditch Witch equipment maintenance and repair. Ask a service representative about our Orange Armor® Planned Maintenance program, a schedule of maintenance at factory-suggested intervals that keeps your equipment in peak operating condition.

