



JT28

HORIZONTAL DIRECTIONAL DRILL



Ditch Witch®

JT28

With 4,200 ft-lbs of torque and 28,000 lbs of thrust and pullback, the JT28 ensures you deliver full torque and horsepower across all jobsite conditions. Even more than just brute force, the JT28 puts the operator front and center. Best-in-class comfort and operator-first features like premier LCD display and a superior view of all machine functions will help optimize use—and productivity.

130-hp (97-kW) Tier 4 Cummins® diesel engine has the most power in its class.

1

Exclusive rotational drive with 4,200 ft-lb (5694 N-m) of torque and a unique single-motor system result in smoother operation.

2

Comfortable operator's station with your choice of single-handed or dual joysticks for more thrust, rotation control and minimal training time.

3

Premier LCD display provides operator with engine diagnostics and informational messages.

4

Open-top vise wrenches are angled toward the operator helping provide an excellent view of the tool joint when making up and breaking out pipe.

5

Daily maintenance points in one easy-to-access location with no grease zerks, minimizing upkeep and downtime.

6

Narrower operational width than competitors' models for greater maneuverability and productivity in tight spaces.

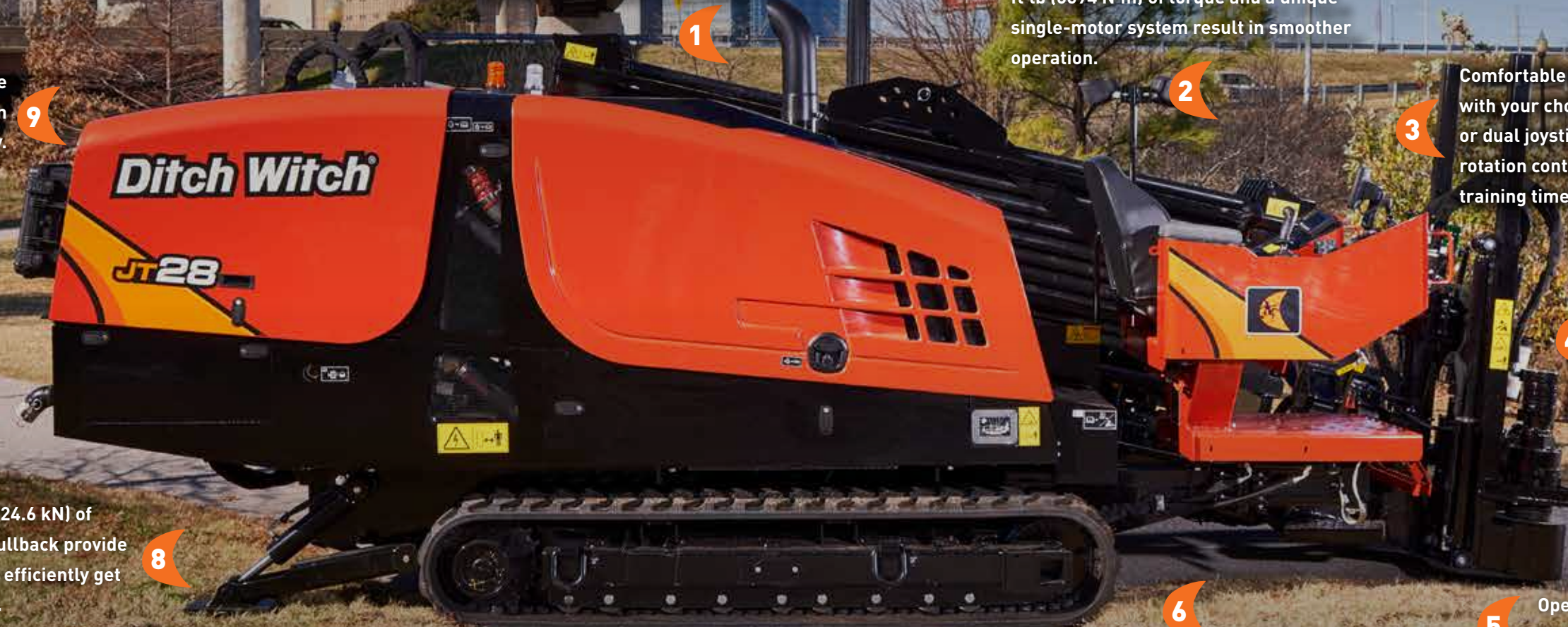
7

28,000 lbs (124.6 kN) of thrust and pullback provide the power to efficiently get the job done.

8

Intuitive, easy-to-use carve mode simplifies operation and improves productivity.

9



JT28 HORIZONTAL DIRECTIONAL DRILL

OPERATION

	U.S.	METRIC
Spindle speed, max	220 rpm	220 rpm
Spindle torque, max	4,200 ft-lb	5690 N-m
Carriage thrust travel speed	182 fpm	55 m/min
Carriage pullback travel speed	190 fpm	58 m/min
Thrust force	28,000 lb	124 kN
Pullback force	28,000 lb	124 kN
Ground travel speed		
Forward	2.8 mph	4.6 km/h
Reverse	2.8 mph	4.6 km/h

POWER

Engine	Cummins® QSB4.5	
Fuel	Diesel	
Cooling medium	Liquid	
Injection	Direct	
Aspiration	Turbocharged & charge air cooled	
Number of cylinders	4	
Displacement	275 in ³	4.5 L
Bore	4.21 in	107 mm
Stroke	4.88 in	124 mm
Manufacturer's gross power rating	130 hp	97 kW
Rated speed Tier 3/Tier 4	2,500 rpm	2500 rpm
Emissions compliance Tier 3	EPA Tier 3	EU Stage IIIA
Emissions compliance Tier 4	EPA Tier 4	EU Stage IV

DIMENSIONS

Transport length	232.5 in	5.90 m
Width w/cab	87 in	2.2 m
Transport height w/cab	99.5 in	2.53 m
Weight w/cab	21,360 lb	9689 kg
Ground clearance	5.7 in	145 mm
Entry angle, max	9-20°	9-20°
Entry angle, tracks on ground	9-17°	9-17°

DRILLING FLUID SYSTEM (ONBOARD)

Pressure, max	1,200 psi	83 bar
Flow, max	50 gpm	189 L/min

FLUID CAPACITIES

Fuel tank, Tier 4	48 gal	182 L
Fuel tank, Tier 3	56 gal	212 L
Hydraulic reservoir	27 gal	102 L

POWER PIPE® HD

	U.S.	METRIC
Length	118 in	3 m
Joint diameter	2.75 in	70 mm
Pipe diameter	2.38 in	60 mm
Bend radius, min	123 ft	37.5 m
Weight of drill pipe, lined	88 lb	40 kg
Weight of lined drill pipe & large box (55 pipe)	5,647 lb	2562 kg
Weight of lined drill pipe & small box (25 pipe)	2,770 lb	1257 kg

POWER PIPE FORGED HD

Length	118 in	3 m
Joint diameter	2.75 in	70 mm
Pipe diameter	2.38 in	60 mm
Bend radius, min	123 ft	37.5 m
Weight of drill pipe	76 lb	34.5 kg
Weight of drill pipe & large box (55 pipe)	4,987 lb	2262 kg
Weight of drill pipe & small box (25 pipe)	2,470 lb	1120 kg

DITCH WITCH FORGED HDX

Length	120 in	3.05 m
Joint diameter	2.63 in	67 mm
Pipe diameter	2.38 in	60 mm
Bend radius, min	123 ft	37.5 m
Weight of drill pipe, lined	74 lb	33.6 kg
Weight of lined drill pipe & large box (55 pipe)	4,877 lb	2212 kg
Weight of lined drill pipe & small box (25 pipe)	2,420 lb	1098 kg

BATTERY (2 USED)

SAE reserve capacity rating	195 min
SAE cold crank rating @ 0°F (-18°C)	950 amps

NOISE LEVEL

Operator sound	86 dBA
Operator sound w/cab	80 dBA
Exterior sound power	104 dBA

Specifications are general and subject to change without notice. If exact measurements are required, equipment should be weighed and measured. Due to selected options, delivered equipment may not necessarily match that shown.

*Stability claim based on lab test of competitive equipment.

